

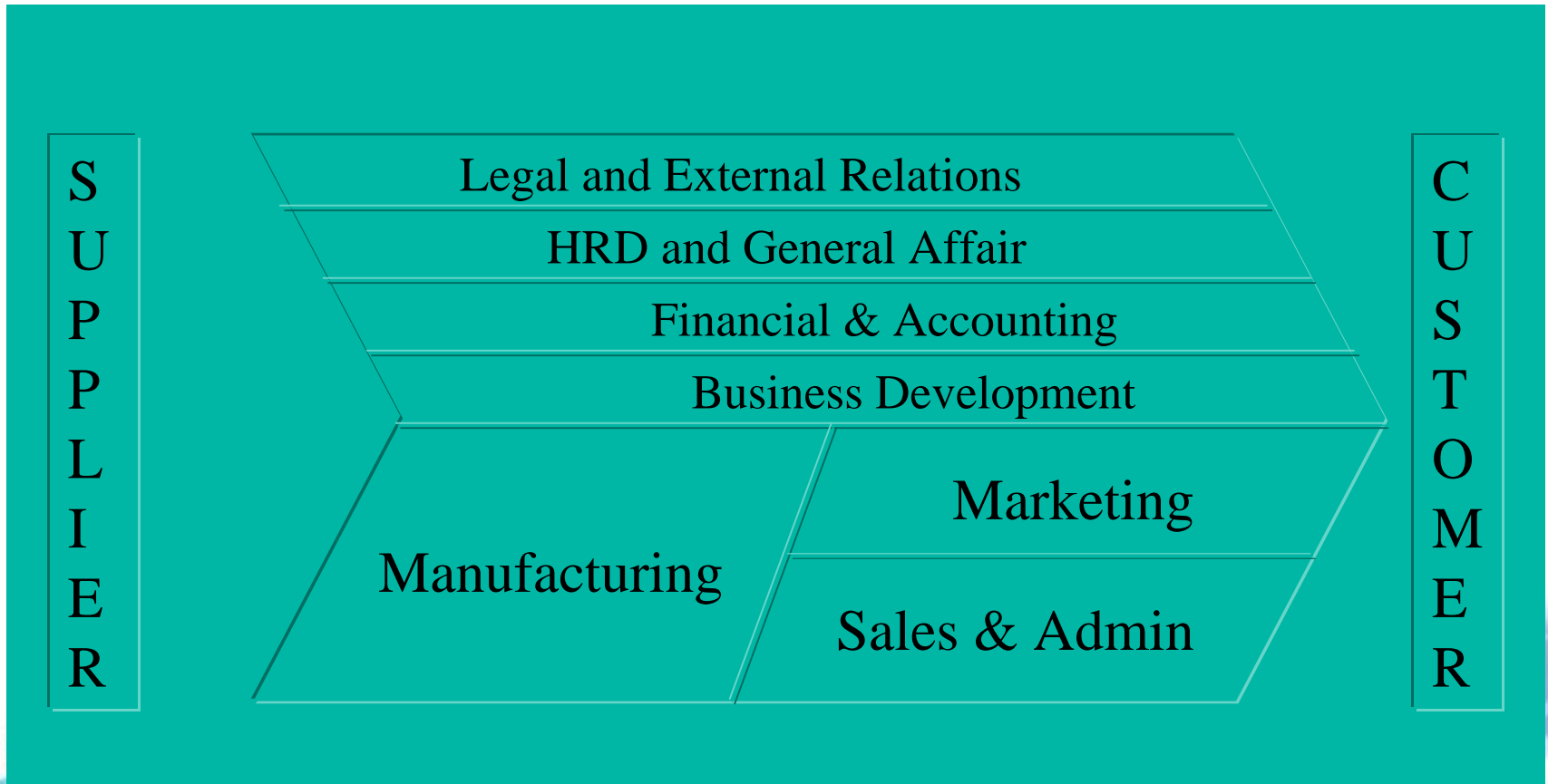
What is Puzzle System???

Puzzle system is PST's Product an ERP system which integrated many module into one online system

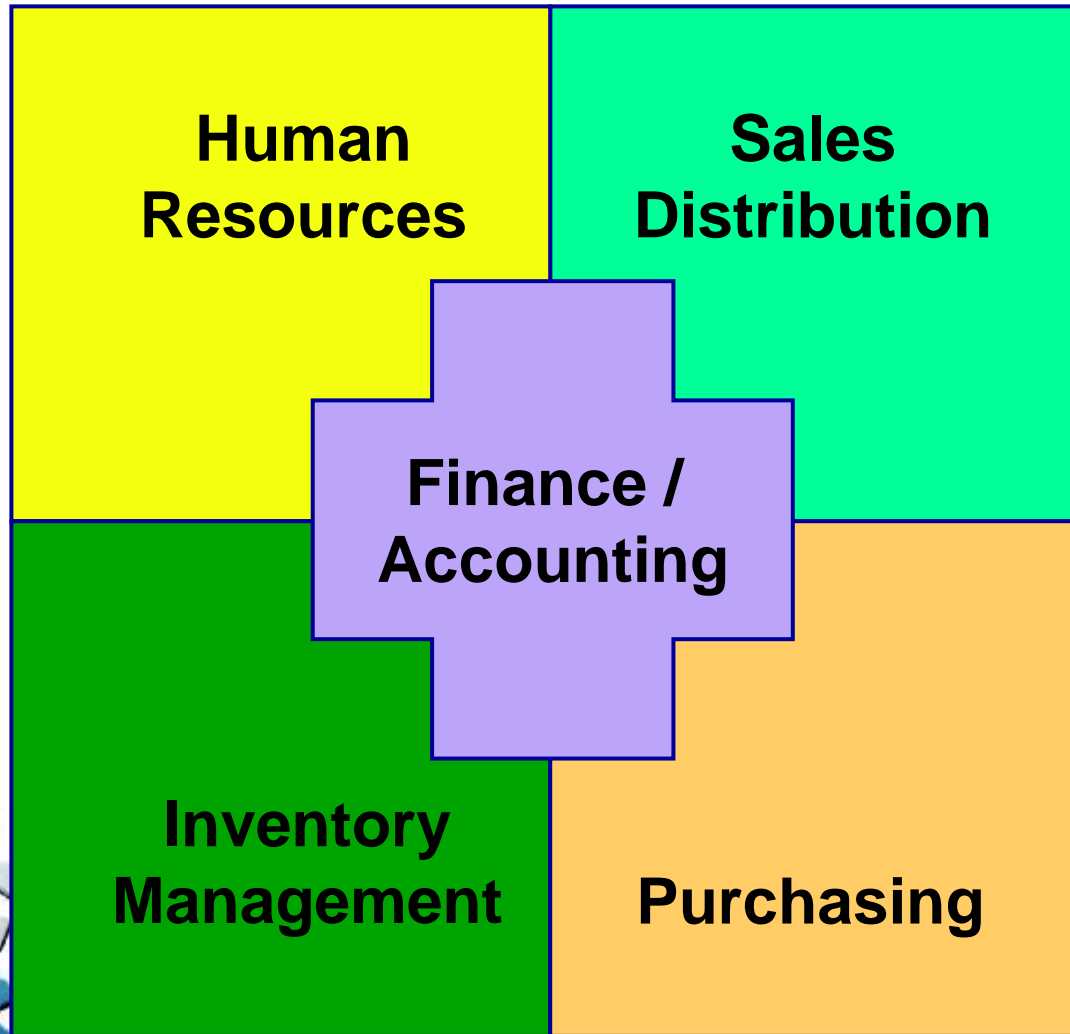
Using ORACLE® Data base and client server architecture Puzzle is one of the best values ERP

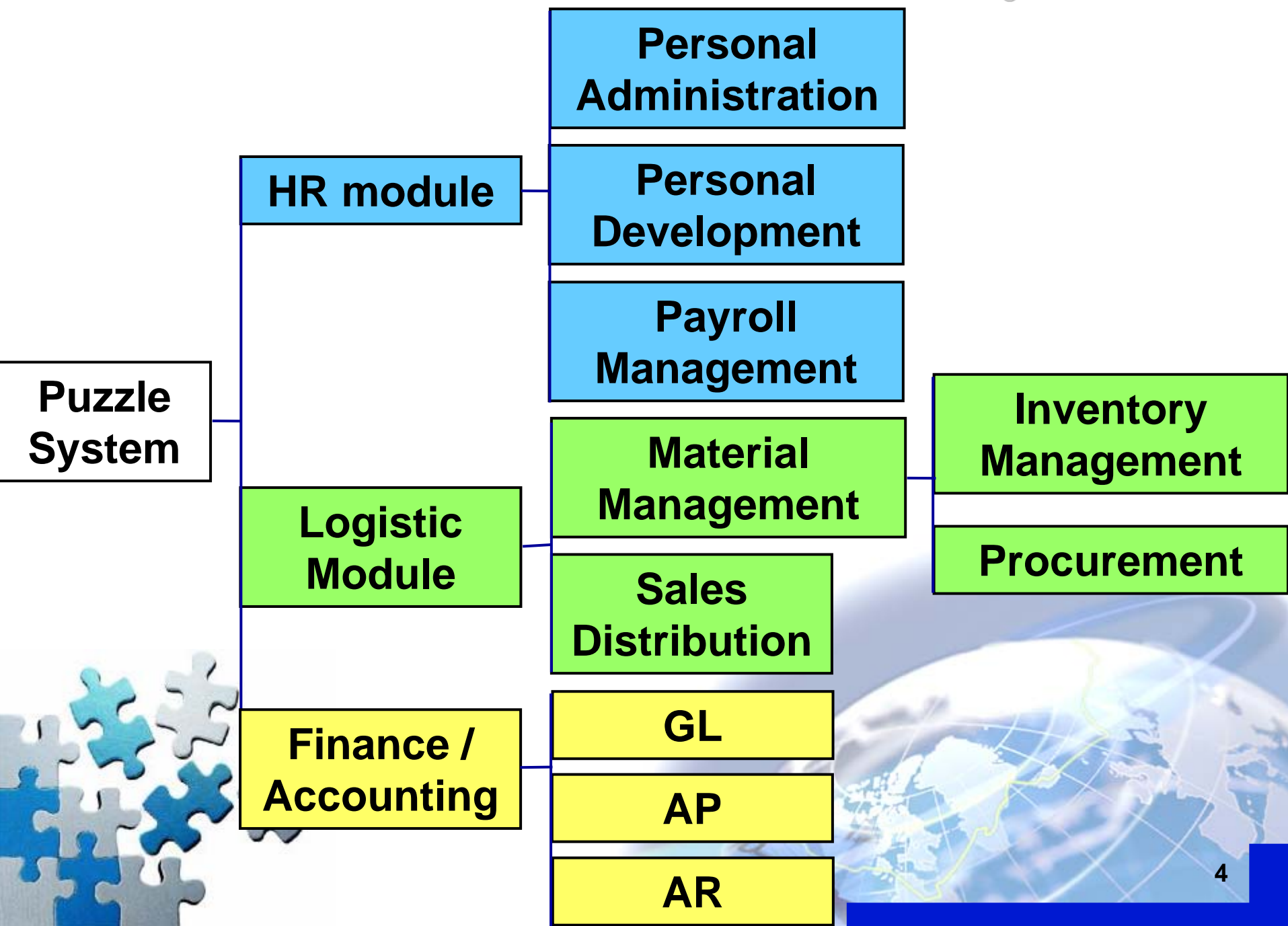


Value Chain

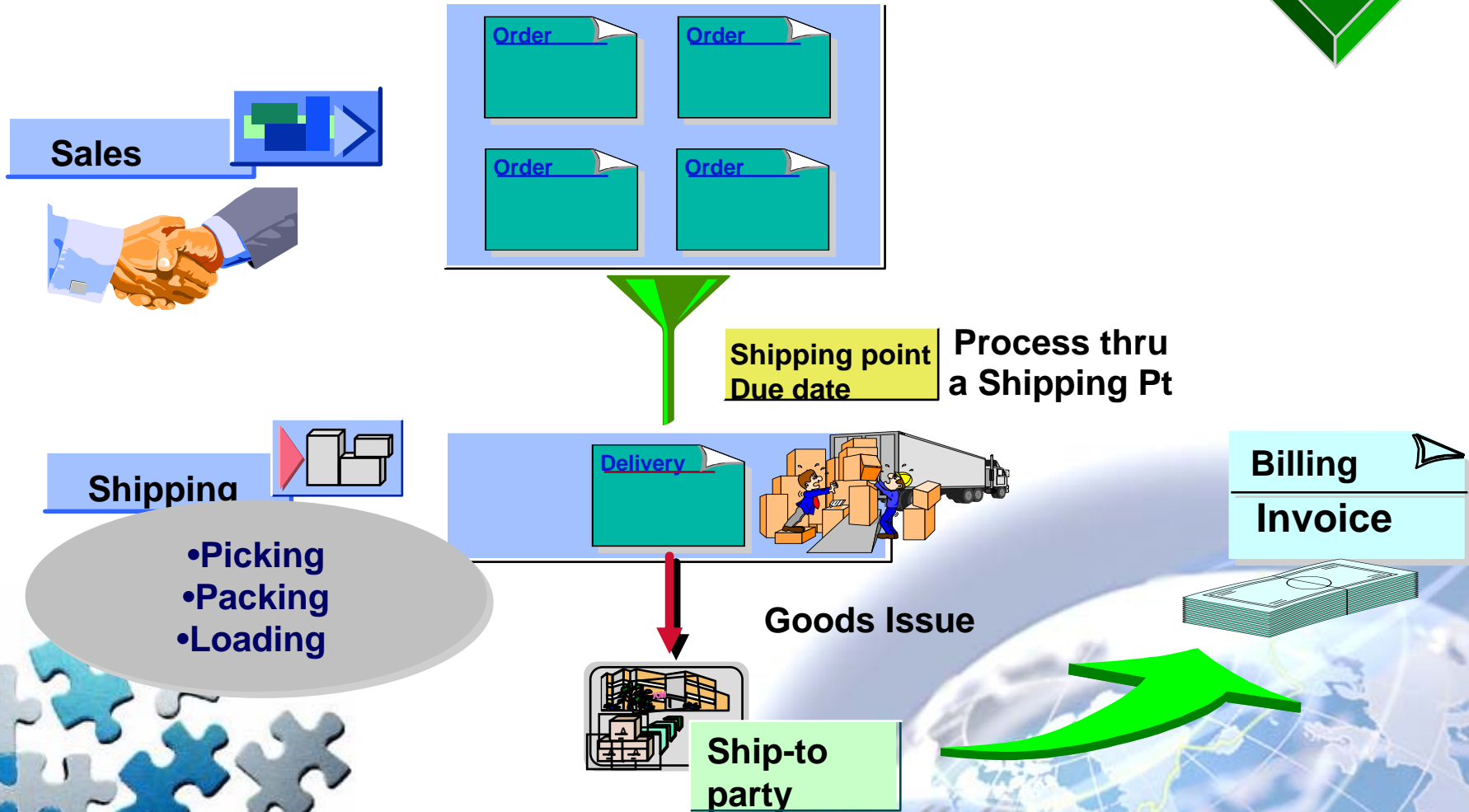


Puzzle Modules Integration



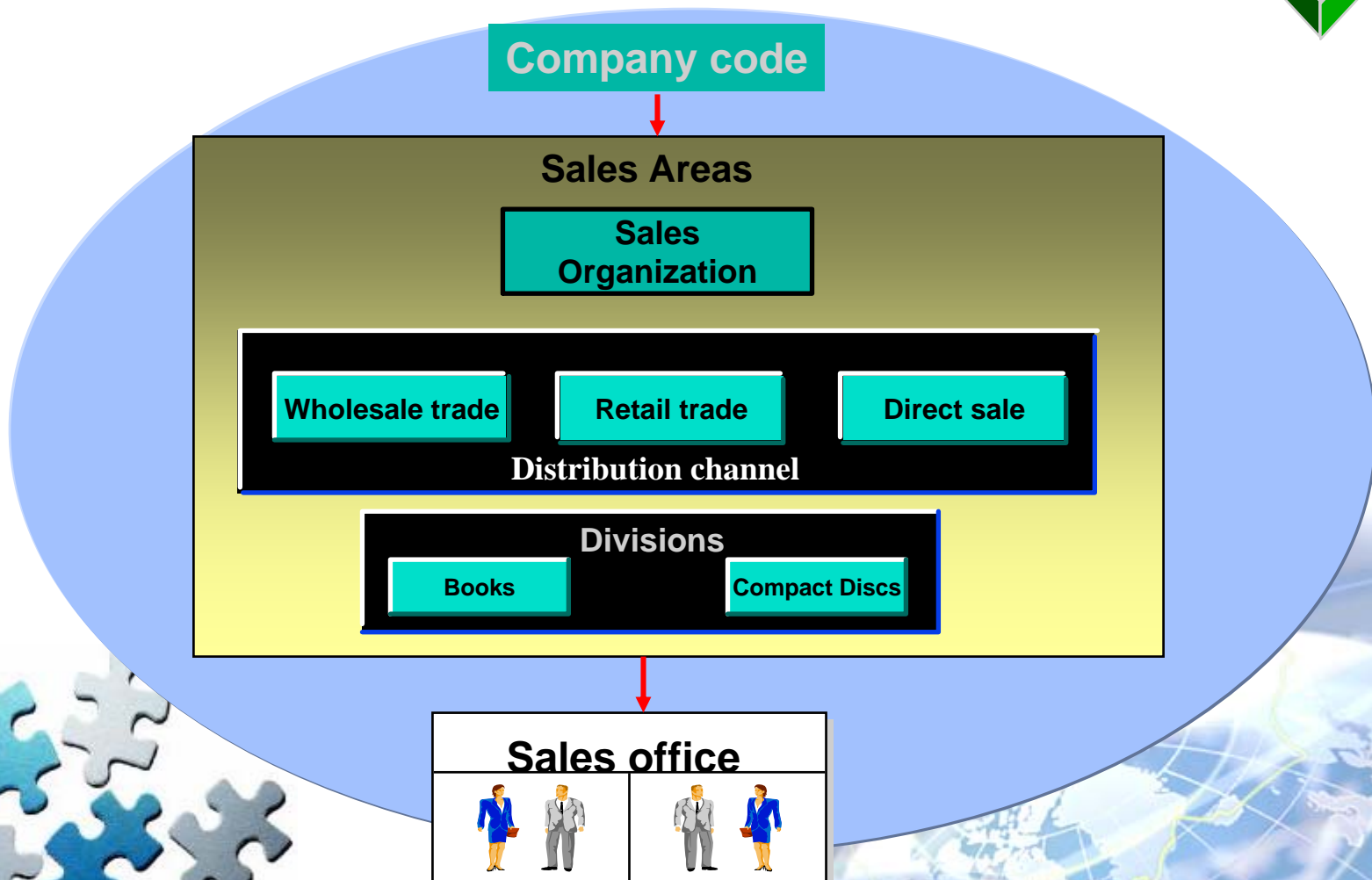


Sales & Distribution Overview

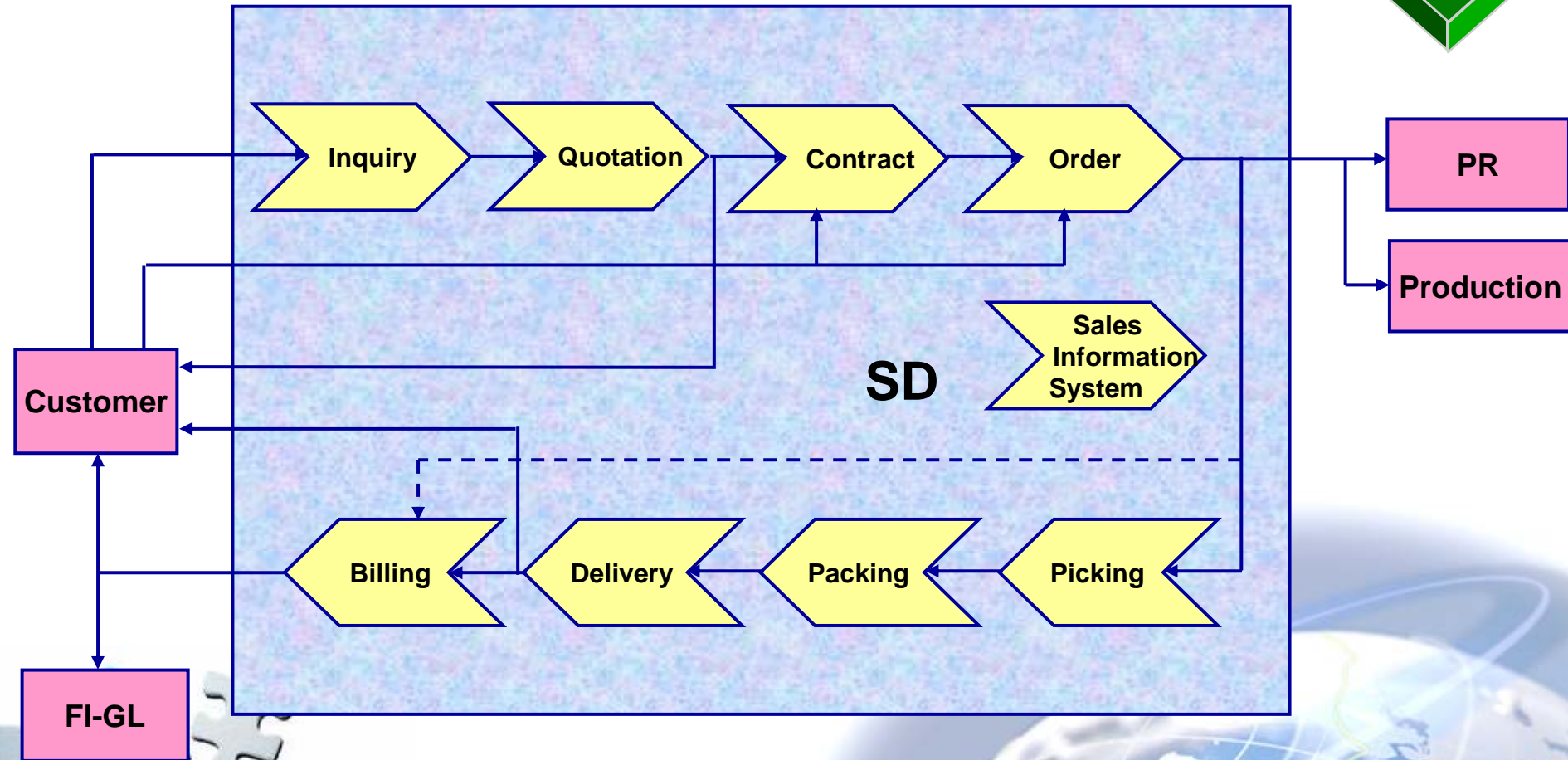




Organization Structure in SD



Sales Distribution Business Model



SD = Sales and Distribution

Sales and Distribution

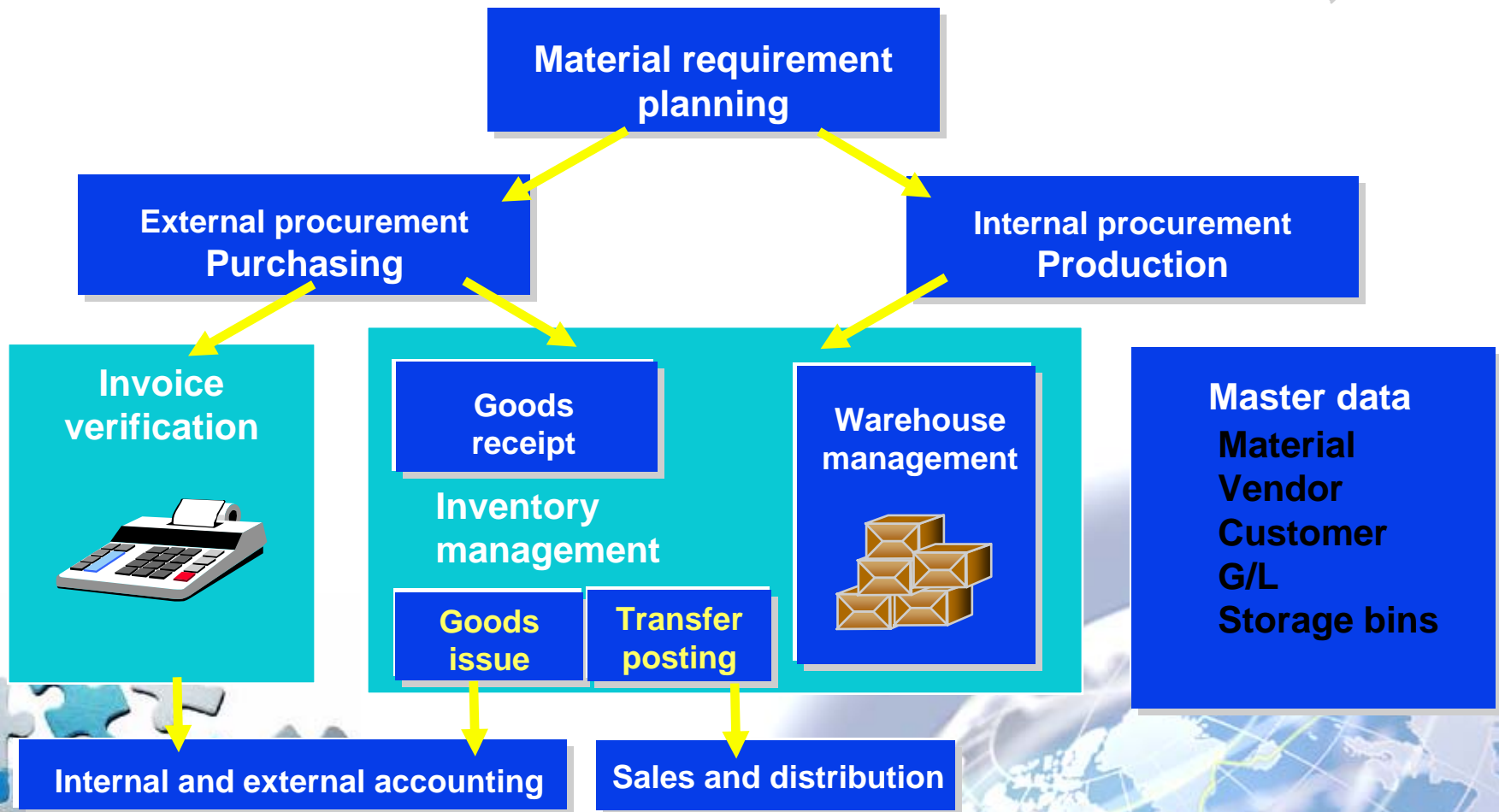
- Reduce Time to Market
- Decrease Product Inventory
- Improve Level of Customer Service

Measurements

- Reduce time to market
- Reduce Inventory to a Just in Time Model
- Provide accurate global visibility of product and customer information

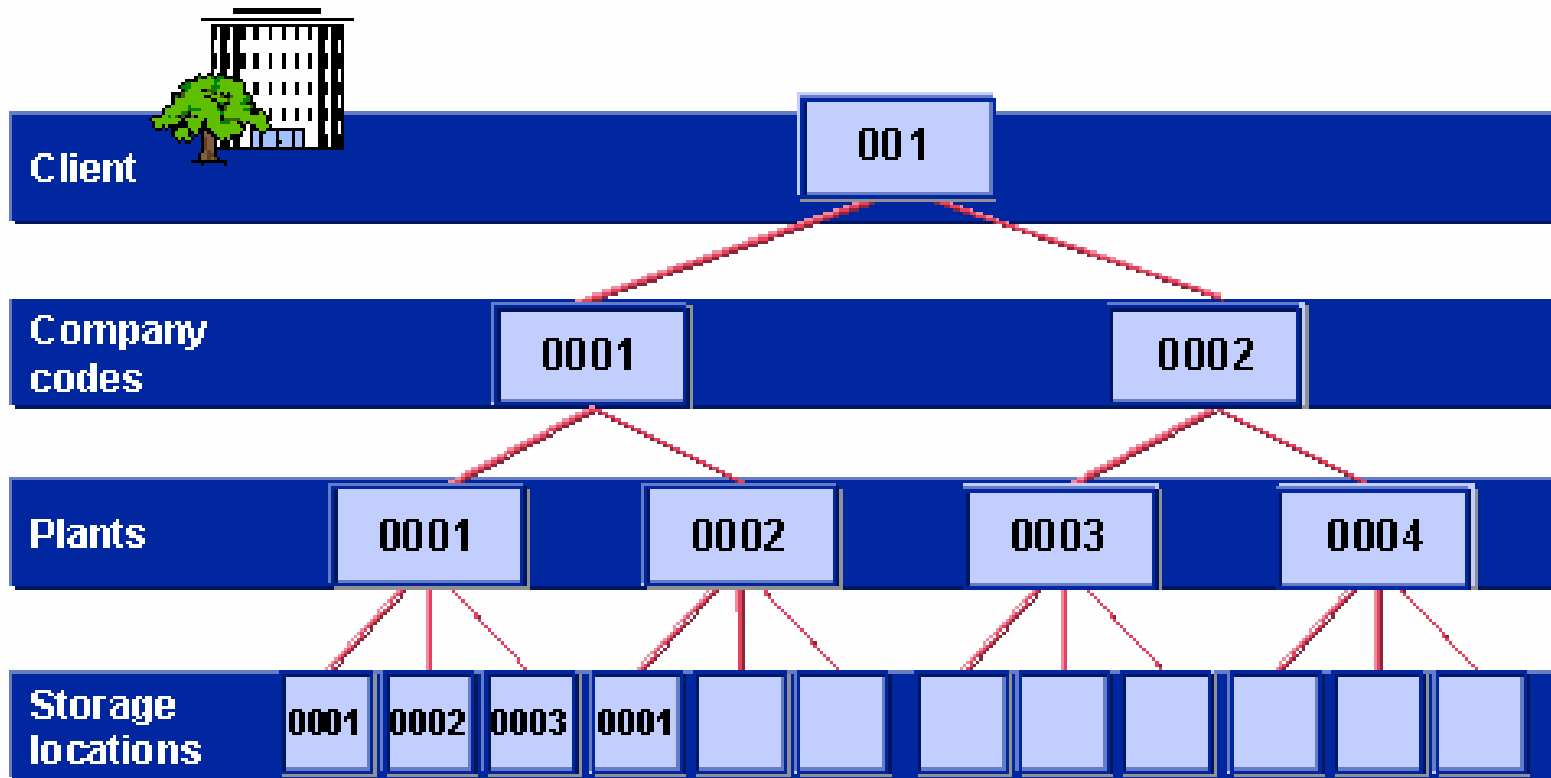


Material Management Overview

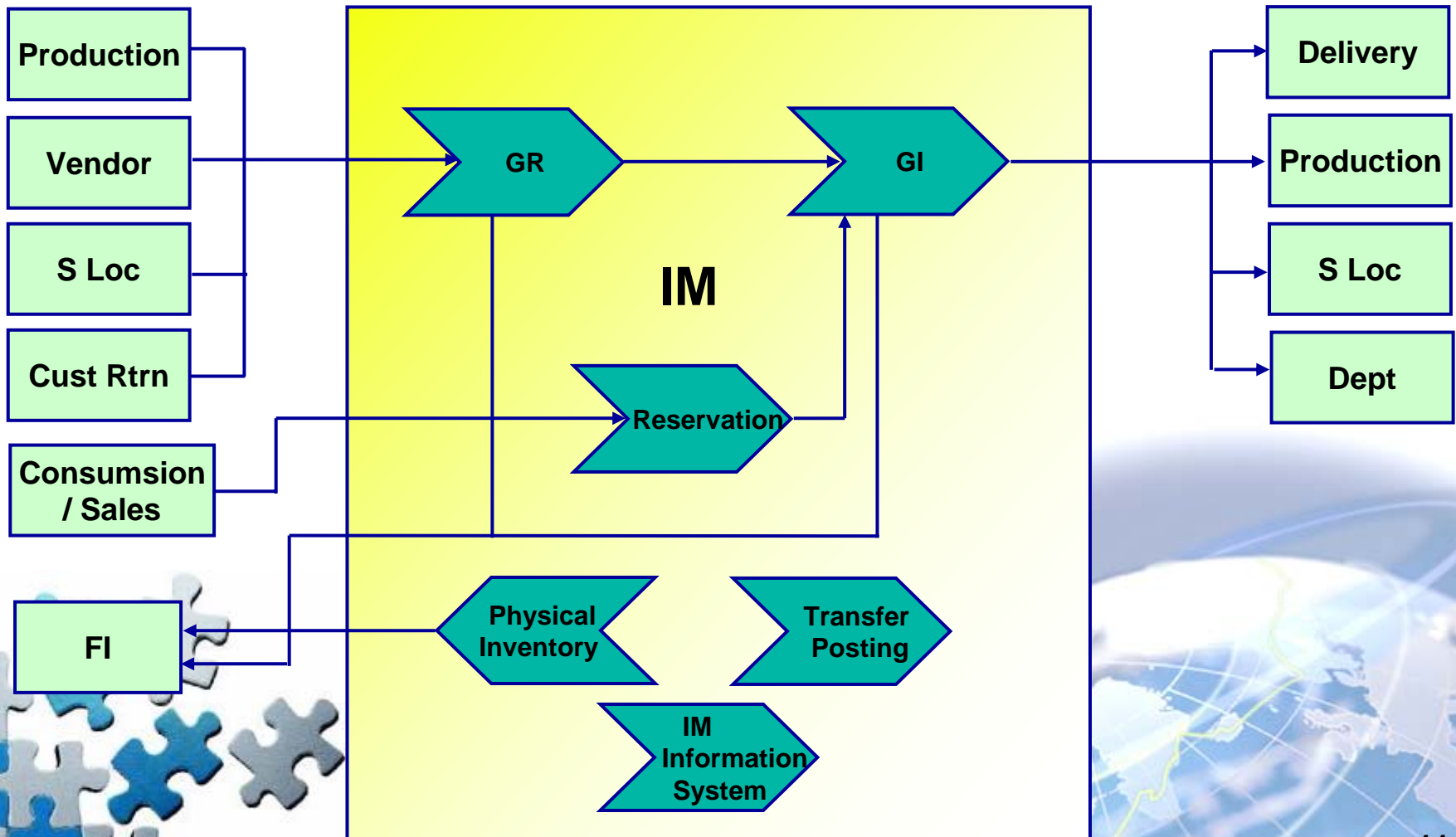
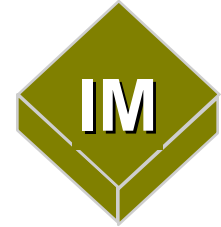




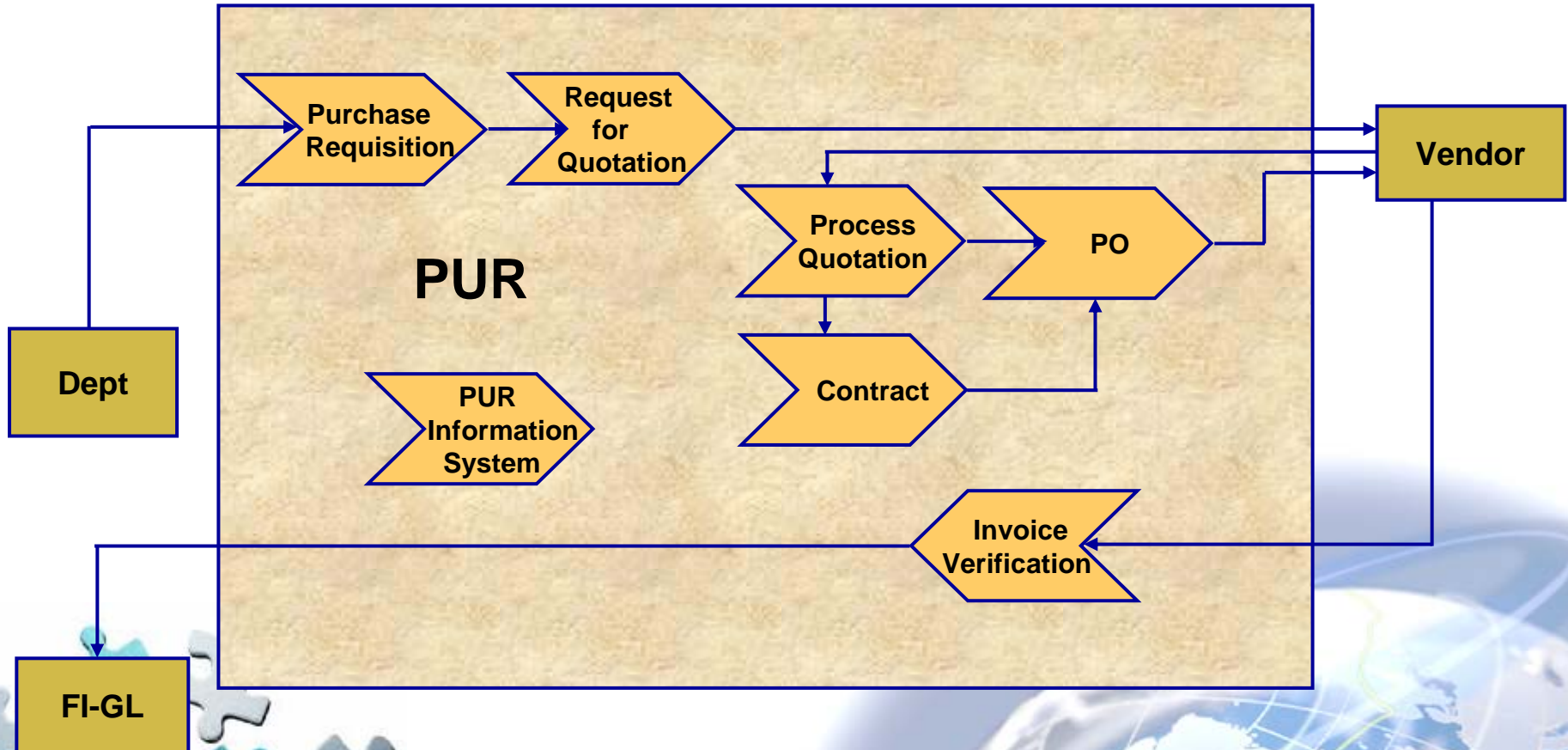
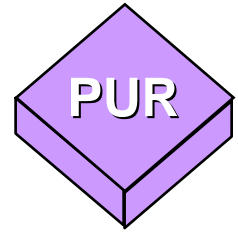
MM Organizational Structure



Inventory Management Business Model



Purchasing Business Model



MM = Material Management

Business Drivers

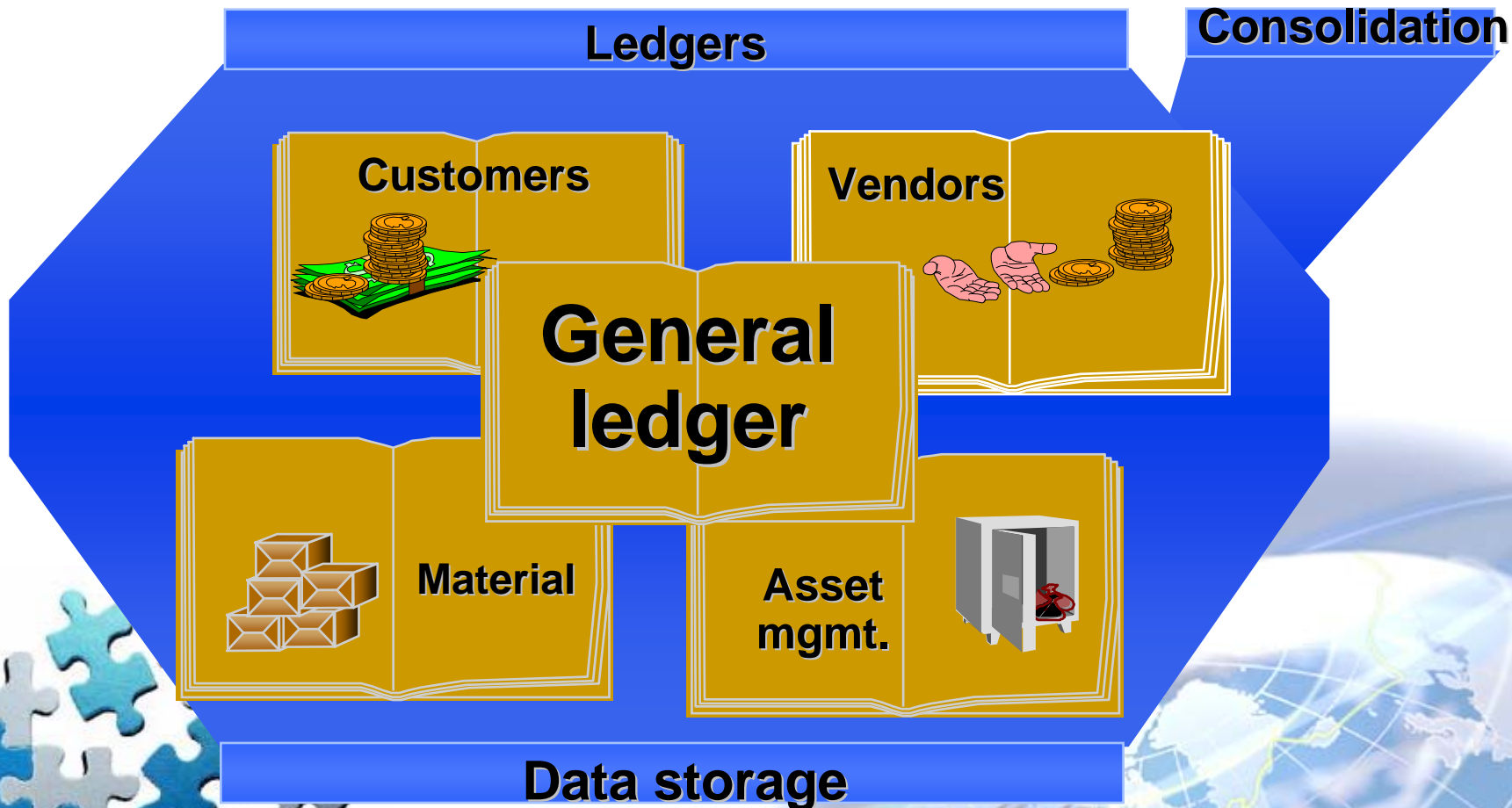
- Simplify Inter-company transfers
- Control of Inventory Levels

Measurements

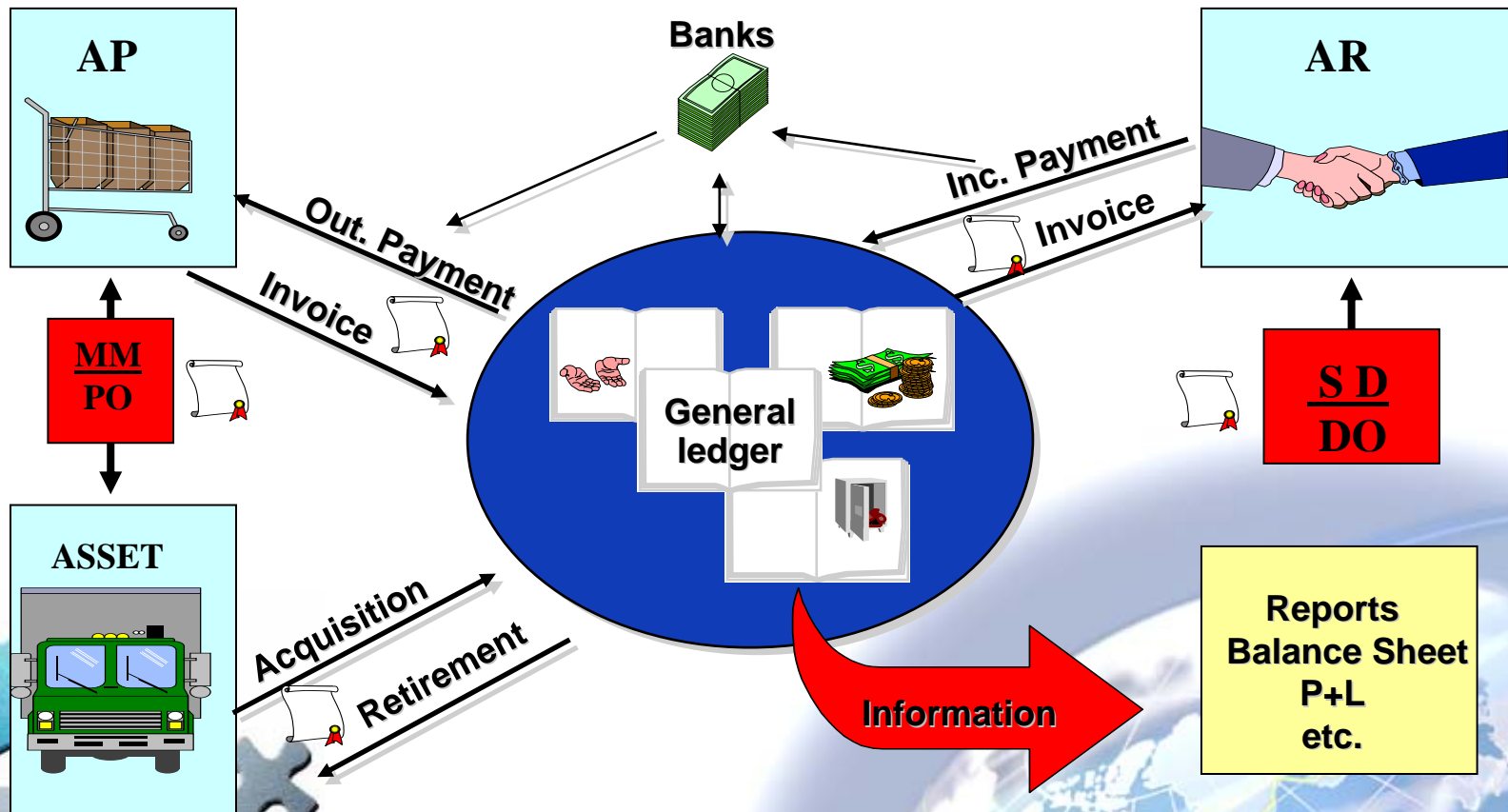
- Global visibility of all systems achieved from one system.
- Increase Inventory Turns by decreasing Inventory Level



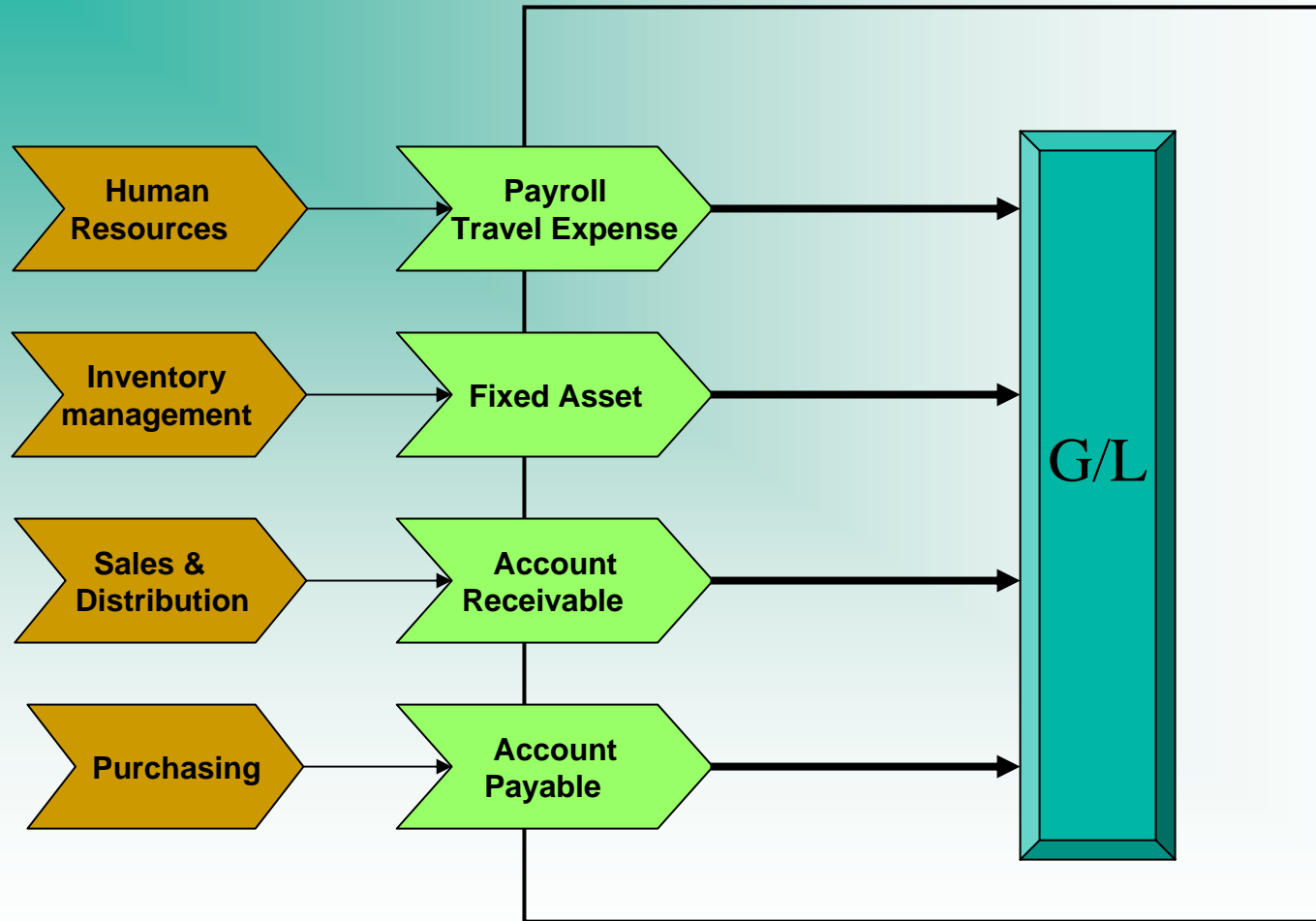
Financial Accounting



BUSSINES TRANSACTION



Financial Accounting Business Model



FI/ACC = Financial and Accounting

Finance

- Multiple currency capability
- Multiple user task functionality
- High functionality in Cost analysis
- Real-time processing of information

Measurements

- Ability to handle multiple currencies
- Users can do posting, run reports simultaneously
- Produce accurate detailed profit analysis report to management
- Accurate real-time information analysis



Human Resources Business Model

